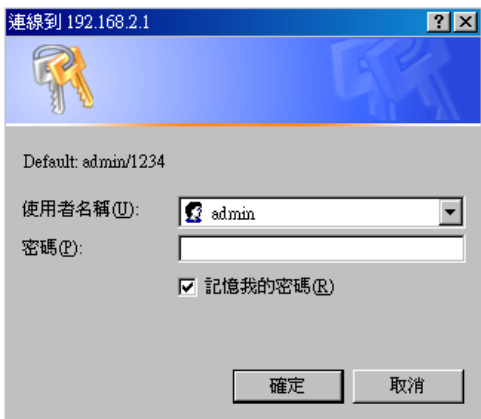


預設密碼 1234



按區域網路進入



UPnP 預設是關閉的要打開

廣域網路存取型態: 動態IP

主機名稱:

自動取得DNS
 手動設定DNS

DNS 1:
DNS 2:
DNS 3:

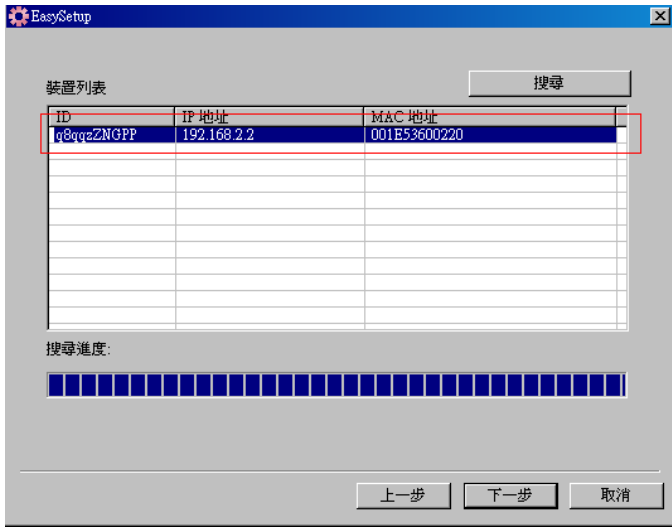
複製MAC位址:

啟用UPnP
 Enable TTL
 啟用遠端管理

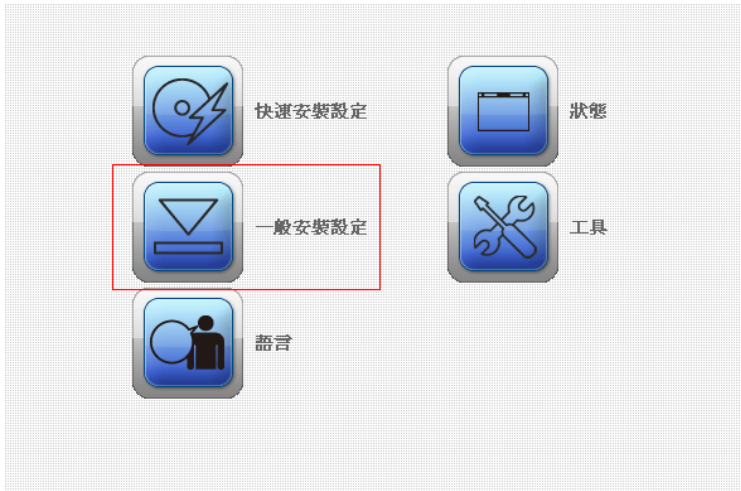
需要啓用 DMZ 才能穿透



查出 IP 位址



到剛剛的網頁進入->區域網路->一般安全設定



進階設定



開啓 DMZ

Restricting your local network.

<input type="radio"/>	IP過濾	Entries in this table are used to restrict certain types of data packets from your local network to Internet through the Gateway. Use of such filters can be helpful in securing or restricting your local network.
<input type="radio"/>	MAC過濾	Entries in this table are used to restrict certain types of data packets from your local network to Internet through the Gateway. Use of such filters can be helpful in securing or restricting your local network.
<input type="radio"/>	埠傳遞	Behind the NAT firewall. These settings are only necessary if you wish to host some sort of server like a web server or mail server on the private local network behind your Gateway's NAT firewall.
<input checked="" type="radio"/>	DMZ	The DMZ (exposed host) function allows unrestricted internet access of the computer with the specified IP address.
<input type="radio"/>	DDNS	動態DNS

上一步 下一步

把原來查出來的位址打進去

The DMZ (exposed host) function allows unrestricted internet access of the computer with the specified IP address.

啟用DMZ

DMZ 主要IP位址:

設定完成後將 IP 分享器重新啓動並移除 netTV BOX 電源
待 IP 分享器啓動完成在接上 netTV BOX 的電源