

Build for Heavy Mateiral Lifting!

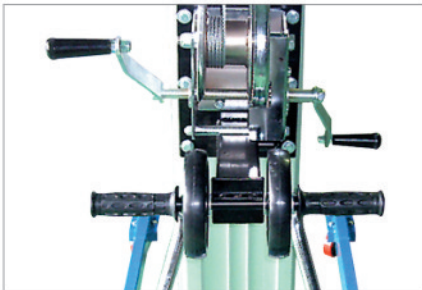


CARGO LIFTER		ES/CS-380	ES/CS-550	ES/CS-700	ES/CS-850
Basic Height	cm	217	217	217	217
Lifting Height (fork up)	cm	330	498	664	816
Lifting Height (fork down)	cm	385	553	716	871
Load capacity	Kg	300	300	250	200
Lenght-Width(Stow)	cm	90x76	90x76	90x76	90x76
Lenght-Width(Operating)	cm	216x170	216x170	216x170	216x170
Fork dimension	cm	64x56	64x56	64x56	64x56
Ground clearance(fork up)	cm	0	0	0	0
Ground clearance(fork down)	cm	58	58	58	58
Machine weight-ES	Kg	176	198	219	240
Machine weight-CS	Kg	144	166	187	209

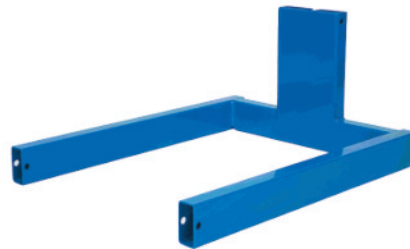


The Perfect Lifter for:

- ◆ HVAC Contractors
- ◆ Electrical Contractors
- ◆ Industrial Maintenance
- ◆ Steel Erectors
- ◆ Facility Management

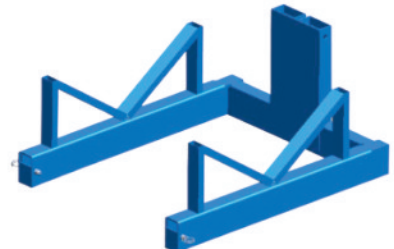


Manual Operation



Standard Fork

- ◆ Load capacity 300 kg
- ◆ To lift construction parts
- ◆ Weight 14 kg
- ◆ Dimension: 600 x 700 mm



Optional Accessory:
Pipe Fork

Electrical or Manual

- 1.KSF- CARGO LIFTER were tested and tested under hardest use condition.
- 2.Robust, durable mast.
- 3.Anty fall system with brake.
- 4.Load capacity 300 kg of 5 M height.
- 5.One person can easily load onto a pick up truck.
- 6.Folding legs, easily set up or move to next job site.
- 7.Cover of steel cable for safety.
- 8.Electric motor, save labor cost.