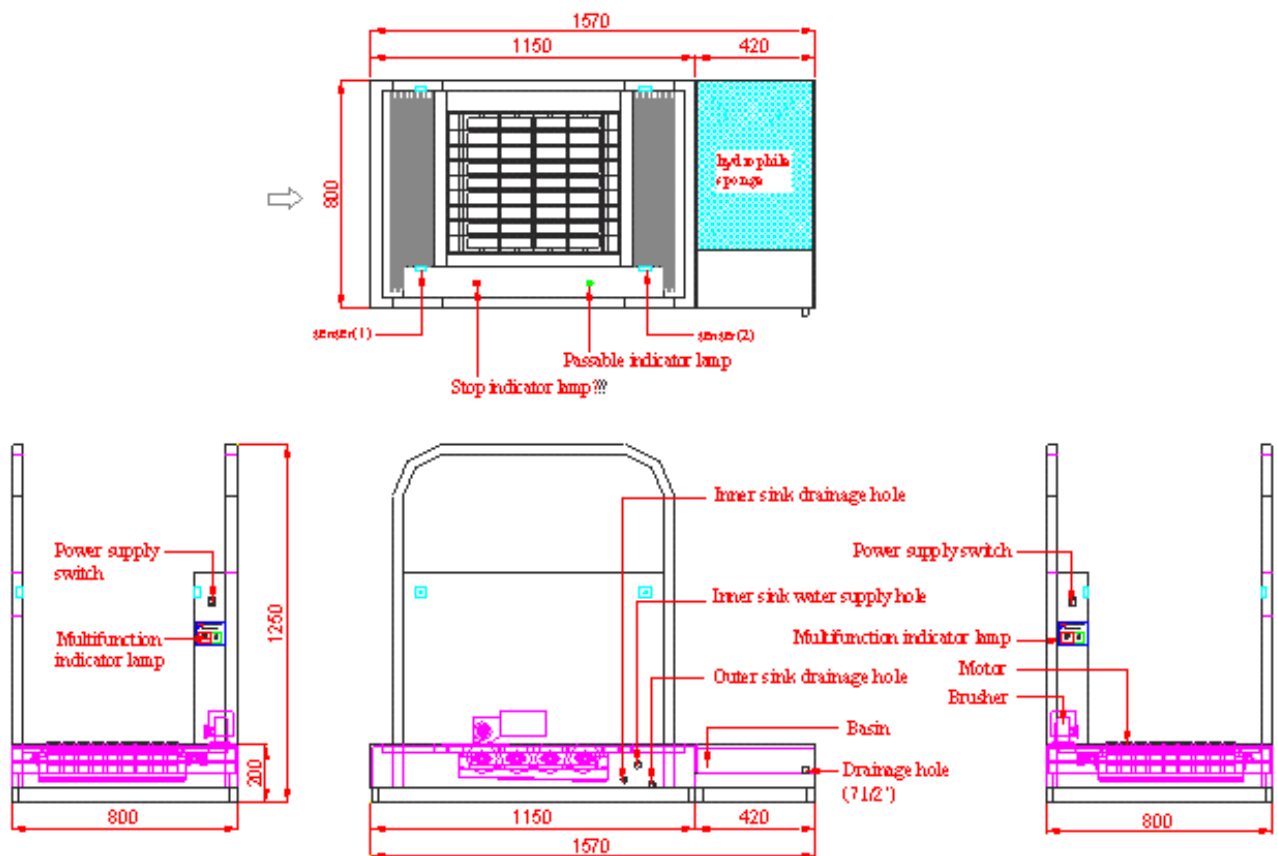


Description

Water wash: Shoes washing machine can effectively remove the dust-free area workers soles pollutants sole stubborn contaminants, such as mud, powder wash removing and can be used with detergent and fungicides wash action, therefore; in the case does not produce dust nor splashes, the sole clean.

Rolling brush: wash shoes cleaning station personnel Station perceptron sensing signal, cleaning round brush automatically open, due for rolling rotary, therefore; residual dirt complex depths of the soles bump can also quickly let off Wash

Features



Specification

Outside Dimension	W800×D1200×H1200 mm
Body Construction	1.5t SUS Stainless Steel
Motor	40W×1 set
Power Consumption	90W
Power Supply	AC 1Ø 220V 50/60Hz
Operation descriptions	<p>1 · When the power supply switch is turned to be ON, the green indicator lamp is illuminated and the entrance of personnel is available.</p> <p>2 · The start time of the shoe sloes washing machine, which can be adjustable , is activated by the optoelectronic sensor and it can be preset to be stopped immediately after personnel has passed it .</p> <p>3 · The red indicator lamp is illuminated whenever the shoe sloes washing machine starts running and the entrance of personnel are unavailable consequently.</p> <p>4 · After the shoe sloes washing machine has stopped completely, the green indicator lamp is illuminated again and the entrance of personnel is available again too.</p>
Notices	<p>1 · For the purpose of easily taking out for cleaning, the upper panel is equipped with sa handle.</p> <p>2 · There are two shield panels with 15 mm in height at both sides to prevent water from being sprayed out.</p> <p>3 · Please fill in 1/3 of the inner tank with water. Don't over filling it to try to prevent water from being sprayed out.</p> <p>4 · There has a drain hole with plug at the rear side beneath the inner tank. And it makes the cleaning work easier.</p> <p>5 · There have two valves being installed at the side of the outer tank. And the inlet valve is the one which is on the top while the drain valve is at the bottom consequently.</p>