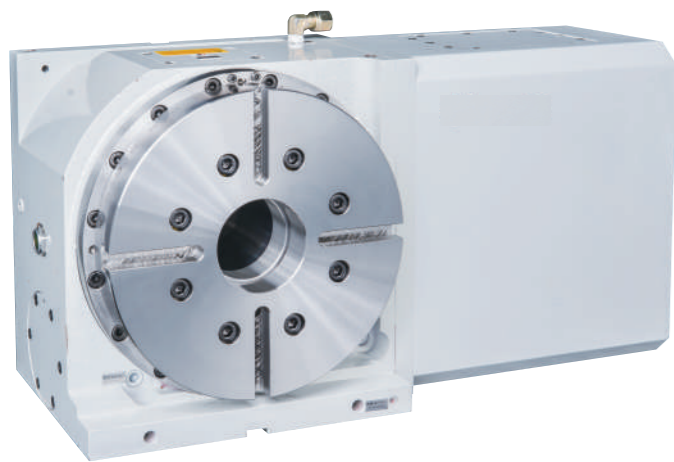


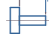


# AR series

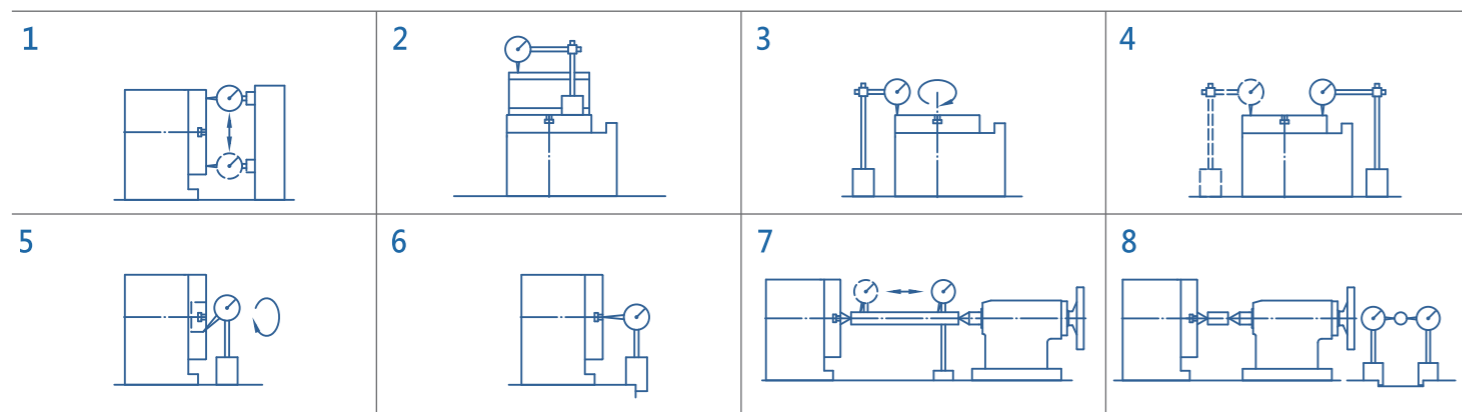
- » CNC rotary table.
- » Vertical and horizontal dual-purpose. Can be use on different types of processing.
- » Optional HFT, HFTS, HMT series.
- » Optional modular angle encoder.



## SPECIFICATION

MODEL	UNIT	AR-135	AR-170	AR-200	AR-250	AR-320	AR-400	AR-500	AR-800	
Table Diameter	Ømm	135	170	200	250	320	400	500	800	
Spindle Hole	Ømm	30H7	60H7	60H7	75H7	75H7	150H7	200H7	360H7	
Center Height	mm	110	135	160	160	210	255	310	530	
Total Speed Reduction Ratio		30	36	36	60	60	60	60	180	
Max. Rotation Speed (3000 rpm)	rpm	100	83.3	83.3	50	50	50	50	16.7	
Indexing Accuracy	sec	±20	±15	±10	±10	±10	±10	±10	±10	
Repeatability	sec	8	8	4	4	4	4	4	4	
Min. increment	deg.	0.001°	0.001°	0.001°	0.001°	0.001°	0.001°	0.001°	0.001°	
Weight (Without Motor)	kg	28	64	68	107	168	320	500	1410	
Resource (Pneumatic / Hydeaulic)	kg/cm <sup>2</sup>	5 (Pneumatic)	5 (Pneumatic)	5 (Pneumatic)	30 (Hydeaulic)	30 (Hydeaulic)	30 (Hydeaulic)	30 (Hydeaulic)	30 (Hydeaulic)	
Output Braking Torque	Nm	79	138	138	882	1470	2744	3920	7350	
Allowable Work Weight	Vertical	kg	20	70	70	125	170	230	320	720
	Horizontal	kg	40	140	140	250	340	480	640	1420
Maximum load (when the rotary table is clamped)		kgf	600	1100	1400	2000	3000	4000	5000	10000
		F*L kgf-m	8	50	80	100	250	400	600	700
		F*L kgf-m	15	40	40	95	160	250	350	1000
Allowable Work Inertia	kg-m <sup>2</sup>	0.1	0.48	0.48	1.95	3.7	8.8	18.4	32	

## ACCURACY SPECIFICATION

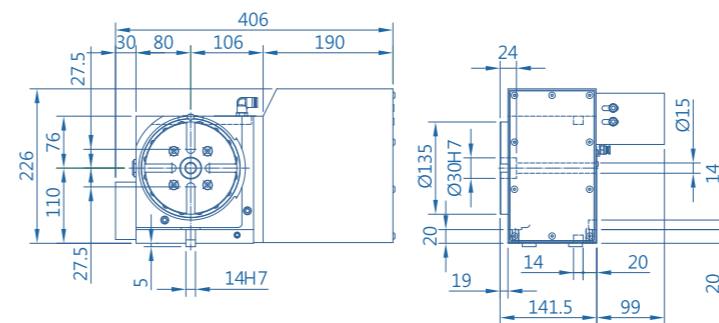


No.	Inspection items	Allowable Tolerance								UNIT: mm
		AR-135	AR-170	AR-200	AR-250	AR-320	AR-400	AR-500	AR-800	
1	Runout of table reference bore	Front	0.01	0.01	0.01	0.01	0.01	0.01	0.01	0.01
2	Straightness of table top	Full Length	0.02	0.02	0.02	0.02	0.02	0.02	0.02	0.03
3	Run-out of table surface indexing accuracy	-	0.02	0.02	0.02	0.02	0.02	0.02	0.02	0.02
4	Parallelism between table surface and table base	Full Length	0.02	0.02	0.02	0.02	0.02	0.02	0.02	0.02
5	Perpendicularity between table top and reference surface for upright mounting	Full Length	0.02	0.02	0.02	0.02	0.02	0.02	0.02	0.03
6	Perpendicularity between table top and bottom locating block for upright mounting	Full Length	0.02	0.02	0.02	0.02	0.02	0.02	0.02	0.03
7	Table top and support spindle center height	-	0.02	0.02	0.02	0.02	0.02	0.02	0.02	0.02
8	Parallelism between center line of table top and support spindle and bottom locating block	300mm	0.02	0.02	0.02	0.02	0.02	0.02	0.02	0.02

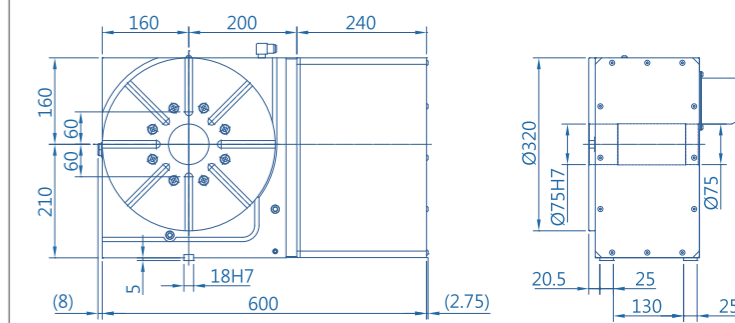
SSPM reserves the right to change designs and specifications.

## DIMENSION DRAWING

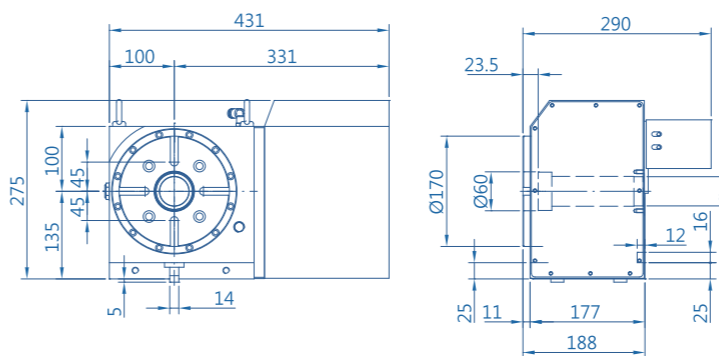
### AR-135



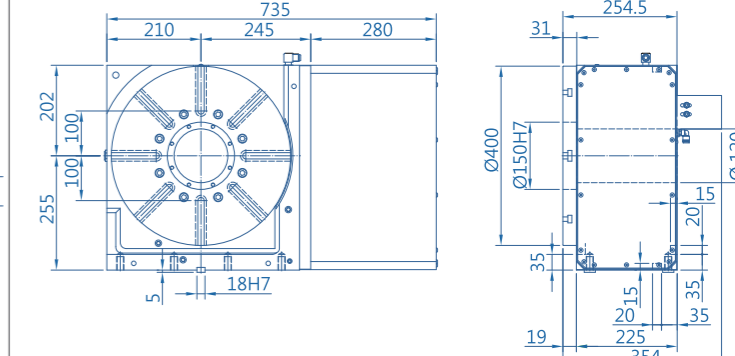
### AR-320



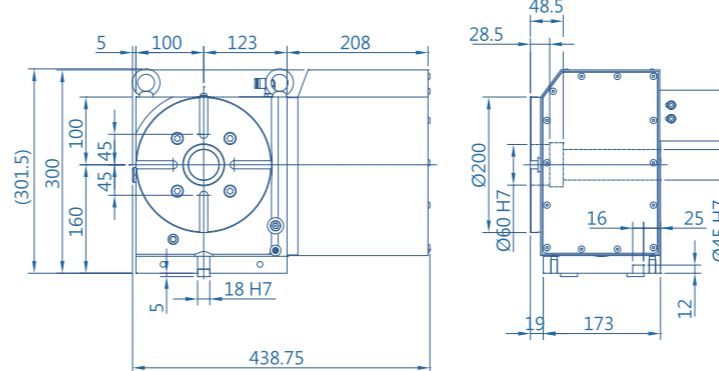
### AR-170



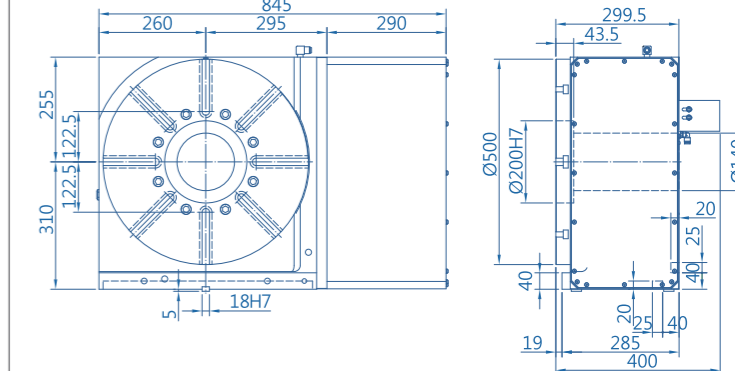
### AR-400



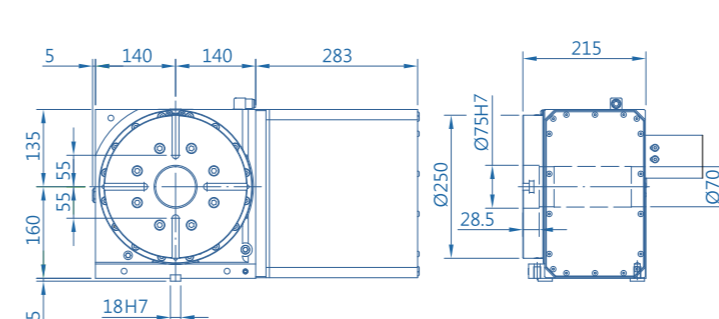
### AR-200



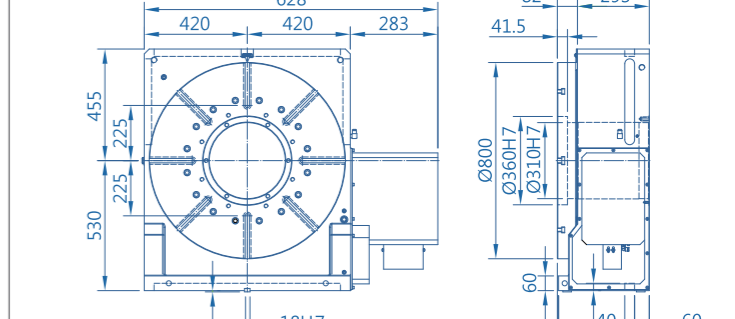
### AR-500



### AR-250



### AR-800



SSPM reserves the right to change designs and specifications.