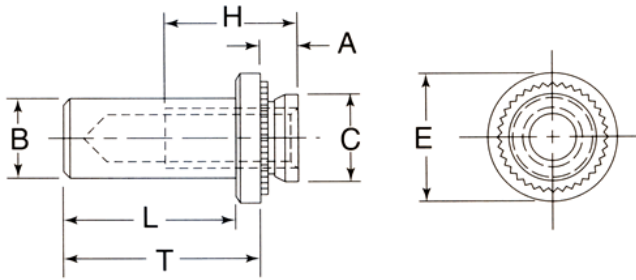


TSC 8 BLIND PRESSED NUTS



DIMENSIONS & SPECIFICATIONS (MILLIMETERS)											
THREAD SIZE	PART NO.	BARREL DIA. B MAX.	MIN.	+0.08 -0.00	SHANK DIA. C MAX.	L MAX.	A MAX.	E ±0.25	T ±0.25	MIN.	H DEPTH FULL THREAD MIN.
M3x0.5	3501	3.8	1.0	4.25	4.22	8.5	0.97	6.35	9.6	4.8	5.3
	3502		1.4				1.37				
M4x0.7	4701	5.2	1.0	5.40	5.38	9.8	0.97	7.95	11.2	6.9	7.1
	4702		1.4				1.37				
M5x0.8	5801	6.0	1.0	6.40	6.38	9.8	0.97	8.75	11.2	7.1	7.1
	5802		1.4				1.37				
M6x1.0	6101	7.8	1.4	8.75	8.72	12.7	1.37	11.10	14.3	8.6	7.8
	6102		2.3				2.21				

DIMENSIONS & SPECIFICATIONS (INCH)											
THREAD SIZE	PART NO.	BARREL DIA. B MAX.	MIN.	+0.003 -0.000	SHANK DIA. C MAX.	L MAX.	A MAX.	E MAX.	T MAX.	MIN.	H DEPTH FULL THREAD MIN.
#4-40	4401	0.149	0.040	0.166	0.165	0.335	0.038	0.25	0.38	0.19	0.21
	4402		0.056				0.054				
#6-32	6321	0.169	0.040	0.187	0.186	0.335	0.038	0.28	0.38	0.22	0.23
	6322		0.056				0.054				
#8-32	8321	0.204	0.040	0.213	0.212	0.385	0.038	0.31	0.44	0.27	0.28
	8322		0.056				0.054				
#10-32	10321	0.235	0.040	0.250	0.249	0.385	0.038	0.34	0.44	0.28	0.28
	10322		0.056				0.054				
1/4-20	4201	0.305	0.056	0.344	0.343	0.500	0.054	0.43	0.56	0.34	0.31
	4202		0.090				0.087				